

952ME2S Mini PCI Express Card

System Requirements

Hardware:

Description

- Fully compliant with PCI Express Base Specification Revision 1.1
- Compatible for PCI Express Card application requirements.
- PCIe Multi Function Peripheral Controller with x1Lane Interface.
- Support four PCIe functions.
- Supports PCIe Power Management.

Serial:

- Two(Four) 16C950 compatible UART.
- Bi-directional speeds from 50 bps to 15Mbps/port.
- Full Serial modem control.
- Serial port transceiver shutdown support.
- Microsoft® Windows® 2000/XP/2003 Sever/VISTA/Win7/Win8.

Package Contents

This PCI Express I/O Card package includes the following:

- Hardware installation guide
- Software installation guide
- MINI PCI-E Card
- Driver CD
- CABLE

Please make sure that all of these items are present. If anything is missing, contact your vendor for assistance.

1. Configuration

The Super PCI Express I/O Card

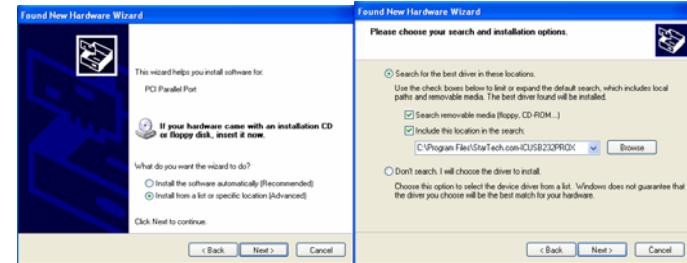


Installing the Software Drivers

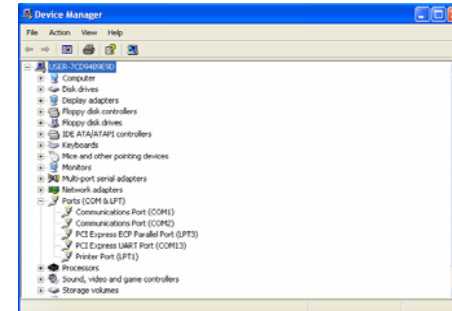
This section provides information on how to install the Super PCI-E I/O drivers for the following operating systems:

Windows 2000 Driver installation

1. At the Add New Hardware Wizard windows®, click on “**Next**”
2. Select the option “**Install from a list or specific location (Advanced)**” and click on “**Next**”



3. Select the option “**Search for the best driver in these location** “ and click on “**Next**”
4. Click “**Next**” and then “**Finish**” respectively.
5. Remove the diskette, then select “**Yes**” to restart the computer for the setup to take effect.

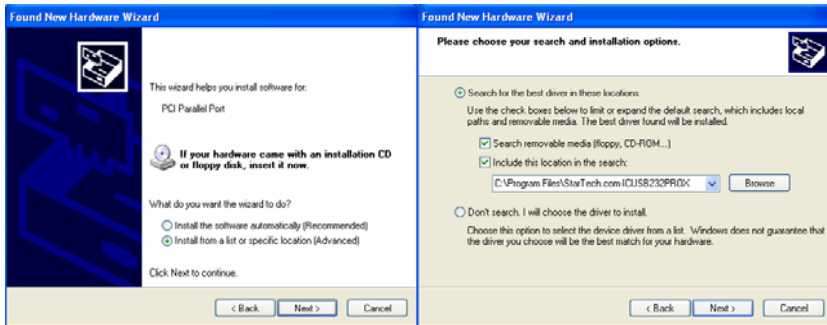


To verify successful installation in Windows® 2000:

1. From the main desktop, click on **My Computer**, then double-click on **Control Panel, System, and Device Manager**.
2. Double-click on either **Ports (COM & LPT)** or **Serial port** device options. **PCI I/O Board** should be displayed when successfully installed. The port is ready to connect new device.

Windows XP Driver installation :

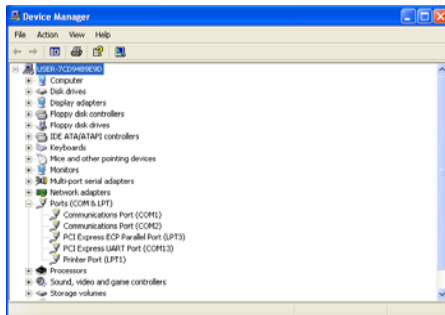
1. At the Add New Hardware Wizard windows®, click on “**Next**”
2. Select the option “**Install from a list or specific location (Advanced)**” and click on “**Next**”



3. Select the option “**Search for the best driver in these location** “ and click on “**Next**”

4. Click “**Next**” and then “**Finish**” respectively.

5. Remove the diskette, then select “**Yes**” to restart the computer for the setup to take effect.



To verify successful installation in Windows® XP:

1. From the main desktop, click on **My Computer**, then double-click on **Control Panel, System, and Device Manager**.
3. Double-click on either **Ports (COM & LPT)** or **Serial port** device options. **PCI I/O Board** should be displayed when successfully installed. The port is ready to connect new device.

Windows VISTA Driver installation:

1. Start power to RUN VISTA
2. CD drive to CD-ROM
3. Click on “**Locate and install driver software (recommended)**”.



4. Install the disc that came with your PCI Serial Port and then “**Next**”
5. Windows encountered a problem installing the driver software for your device and then “**close**” (**Disk D: \UART(CD-ROM)**)
6. Install the disc that came with your 16C95x Serial Port and then “**Next**”
7. Windows encountered a problem installing the driver software for your device and then “**close**”
8. Check the “**Device Manager**” click on “**Device Manager**” to either **Ports (COM & LPT)** device options. **16C95x Serial Port** should be displayed when successfully installed. The port is ready to connect new device.

